

Tabla de capacidades de grúa DERRICK 16 T

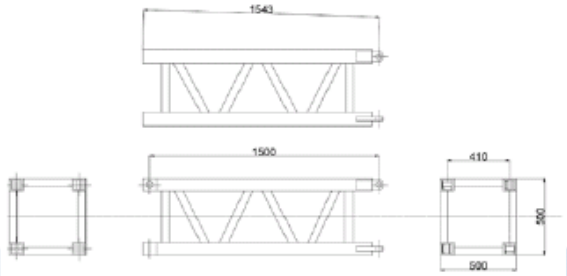
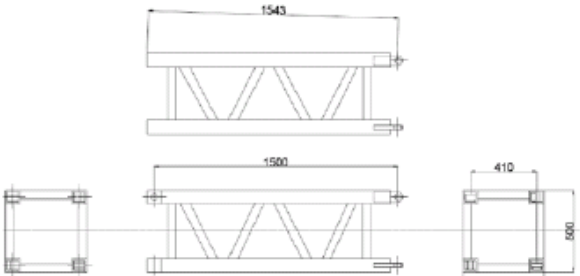
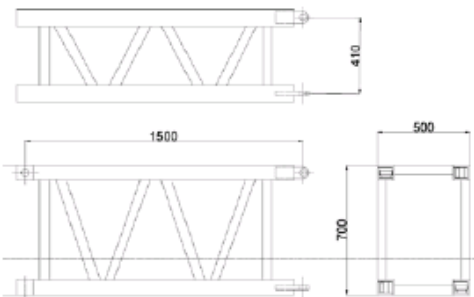
Elemento	Medidas
<p style="text-align: center;">Pluma/Brazo</p> 	<p>Cuerda: 3"x3"x3/8"</p> <p>Diagonal: 2"x2"x1/4"</p> <p>Montante: 2"x2"x1/4"</p>
<p style="text-align: center;">Mástil</p> 	<p>Cuerda: 3"x3"x3/8"</p> <p>Diagonal: 2"x2"x1/4"</p> <p>Montante: 2"x2"x1/4"</p>
<p style="text-align: center;">Piernas/Vientos</p> 	<p>Cuerda: 2.5"x2.5"x3/8"</p> <p>Diagonal: 2"x2"x1/4"</p> <p>Montante: 2"x2"x1/4"</p>

Tabla de capacidades de grúa DERRICK 16 T

Para la revisión de la carga se analizaron 8 posiciones B, en planta separadas a cada 22.5° como se muestra en la siguiente imagen:

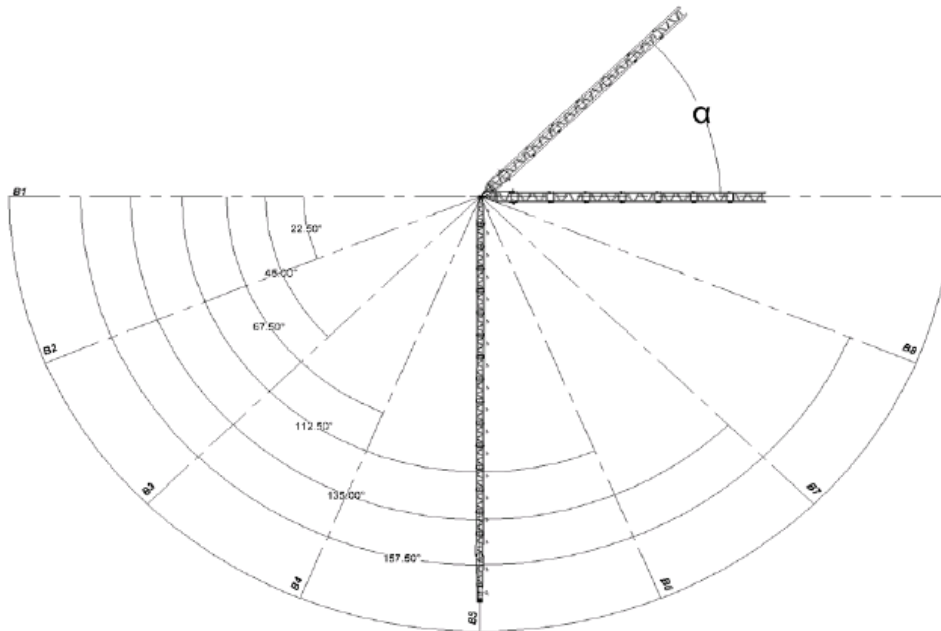


Imagen 1 Posiciones de la grúa en planta

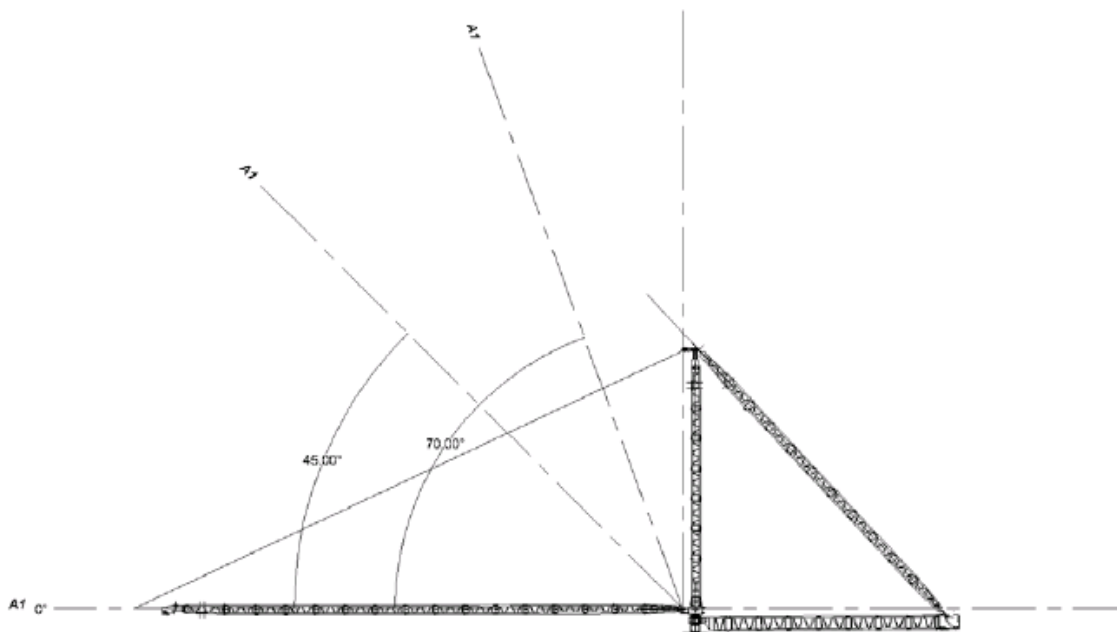


Tabla de capacidades de grúa DERRICK 16 T

GRÚA DERRICK. 16 TON.

TABLA DE CAPACIDADES Y REACCIONES EN LOS APOYOS PARA LA GRÚA DERRICK

Angulo	Carga de Izaje(KG)	REACCIÓN EN EL APOYO DEL MASTIL "RA" (TONELADAS)	REACCIÓN EN LA UNIÓN PIERNA-VIENTO "RB" (TONELADAS)
70°	16000	18.6	7.5
60°	14000	19.8	10.1
50°	12500	20.5	11.9
45°	11000	20.7	12.5
40°	9000	20.7	13.0
30°	8100	20.2	13.3
20°	7100	19.2	12.9
10°	6000	17.6	9.9
0°	5500	15.4	9.2

Altura (m)	Distancia (m)	Carga (kg)
0.00	28.00	5500
4.86	27.57	6000
9.58	26.31	7100
14.00	24.25	8100
18.00	21.45	9000
19.80	19.80	11000
21.45	18.00	12500
24.25	14.00	14100
26.31	9.58	16000

Tabla de capacidades de grúa DERRICK 16 T

Grúas y transportes
CARGAMEX S.A. de C.V.

Diámetro (mm)	Carga (Kg)
18 00	1000
18 07	2000
18 11	3000
18 15	4000
18 19	5000
18 22	6000
18 25	7000
18 28	8000
18 31	9000
18 34	10000
18 37	11000
18 40	12000
18 43	13000
18 46	14000
18 49	15000

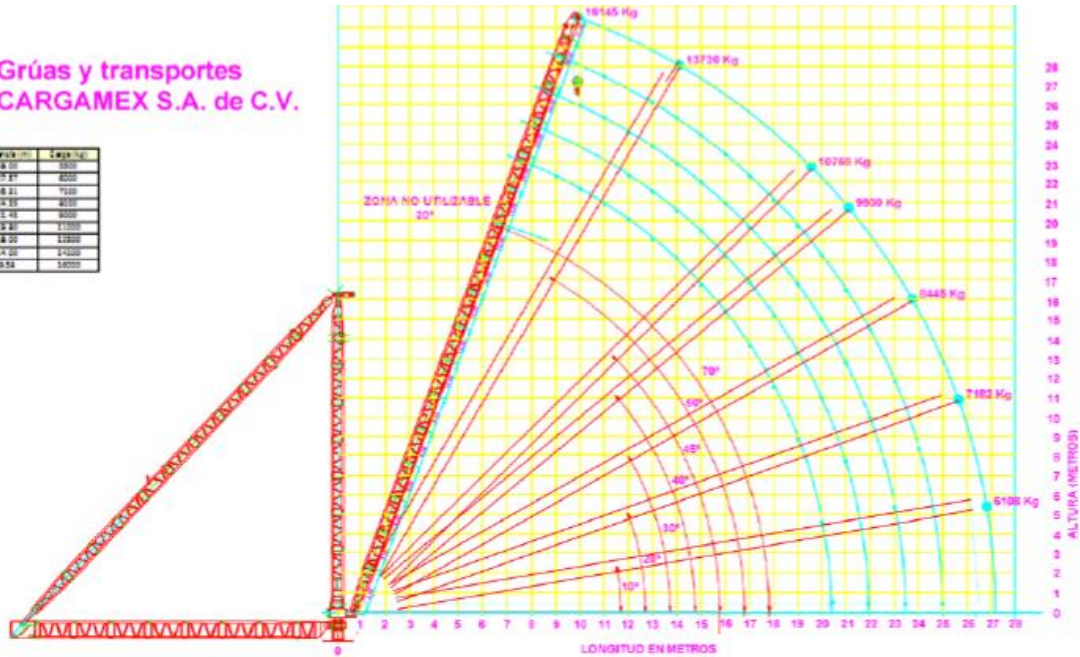


TABLA DE CAPACIDADES
Derrick 16 Toneladas

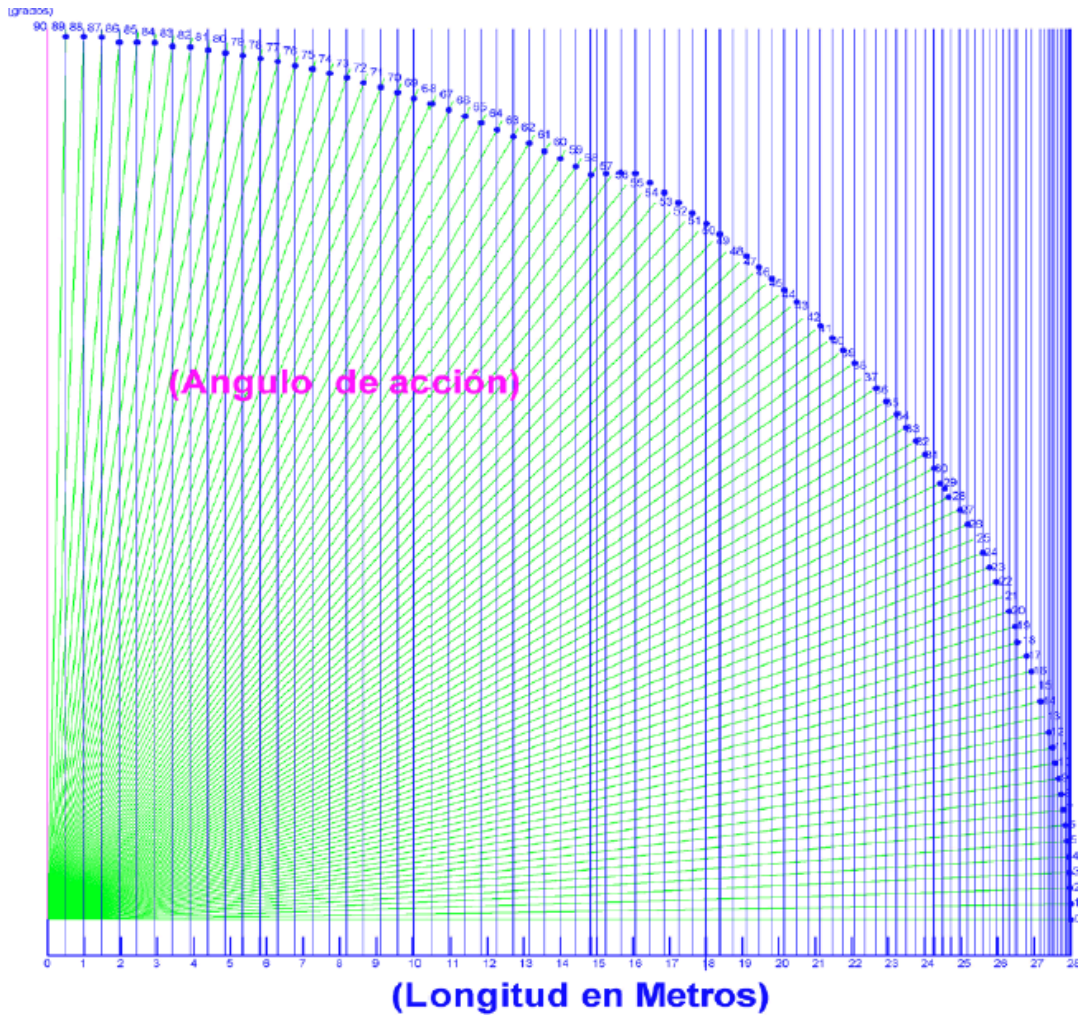


Tabla de capacidades de grúa DERRICK 16 T

<i>Angula</i>	<i>Altura (m)</i>	<i>Distancio (m)</i>	<i>Corgo máximo de tzoje (kg)</i>
90	28.00	0.00	22323.48
89	28.00	0.49	21964.75
88	27.98	0.98	21611.79
87	27.96	1.47	21264.50
86	27.93	1.95	20922.79
85	27.89	2.44	20586.57
84	27.85	2.93	20255.75
83	27.79	3.41	19930.25
82	27.73	3.90	19609.98
81	27.66	4.38	19294.86
80	27.57	4.86	18984.80
79	27.49	5.34	18679.73
78	27.39	5.82	18379.55
77	27.28	6.30	18084.20
76	27.17	6.77	17793.60
75	27.05	7.25	17507.67
74	26.92	7.72	17226.33
73	26.78	8.19	16949.51
72	26.63	8.65	16677.14
71	26.47	9.12	16409.15
70	26.31	9.58	16145.46
69	26.14	10.03	15886.01
68	25.96	10.49	15630.73
67	25.77	10.94	15379.55
66	25.58	11.39	15132.41
65	25.38	11.83	14889.24
64	25.17	12.27	14649.98
63	24.95	12.71	14414.56
62	24.72	13.15	14182.93
61	24.49	13.57	13955.01
60	24.25	14.00	13730.76
59	24.00	14.42	13510.12

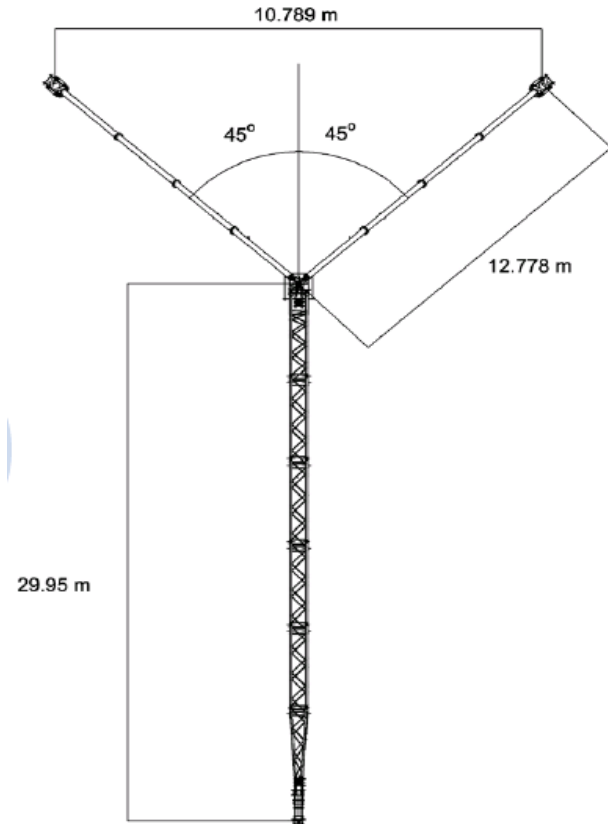
Tabla de capacidades de grúa DERRICK 16 T

58	23.75	14.84	13293.02
57	23.48	15.25	13079.41
56	23.21	15.66	12869.23
55	22.94	16.06	12662.42
54	22.65	16.46	12458.95
53	22.36	16.85	12258.74
52	22.06	17.24	12061.75
51	21.76	17.62	11867.92
50	21.45	18.00	11677.21
49	21.13	18.37	11489.56
48	20.81	18.74	11304.93
47	20.48	19.10	11123.27
46	20.14	19.45	10944.52
45	19.80	19.80	10768.65
44	19.45	20.14	10595.60
43	19.10	20.48	10425.33
42	18.74	20.81	10257.80
41	18.37	21.13	10092.97
40	18.00	21.45	9930.78
39	17.62	21.76	9771.20
38	17.24	22.06	9614.18
37	16.85	22.36	9459.68
36	16.46	22.65	9307.67
35	16.06	22.94	9158.10
34	15.66	23.21	9010.94
33	15.25	23.48	8866.13
32	14.84	23.75	8723.66
31	14.42	24.00	8583.48
30	14.00	24.25	8445.54
29	13.57	24.49	8309.83
28	13.15	24.72	8176.29
27	12.71	24.95	8044.90
26	12.27	25.17	7915.63
25	11.83	25.38	7788.43

Tabla de capacidades de grúa DERRICK 16 T

24	11.39	25.58	7663.27
23	10.94	25.77	7540.13
22	10.49	25.96	7418.96
21	10.03	26.14	7299.74
20	9.58	26.31	7182.44
19	9.12	26.47	7067.02
18	8.65	26.63	6953.46
17	8.19	26.78	6841.72
16	7.72	26.92	6731.78
15	7.25	27.05	6623.60
14	6.77	27.17	6517.16
13	6.30	27.28	6412.43
12	5.82	27.39	6309.39
11	5.34	27.49	6208.00
10	4.86	27.57	6108.24
9	4.38	27.66	6010.08
8	3.90	27.73	5913.51
7	3.41	27.79	5818.48
6	2.93	27.85	5724.98
5	2.44	27.89	5632.98
4	1.95	27.93	5542.46
3	1.47	27.96	5453.40
2	0.98	27.98	5365.76
1	0.49	28.00	5279.54
0	0.00	28.00	5194.70

Tabla de capacidades de grúa DERRICK 16 T



PLANTA (puntos de apoyo)

